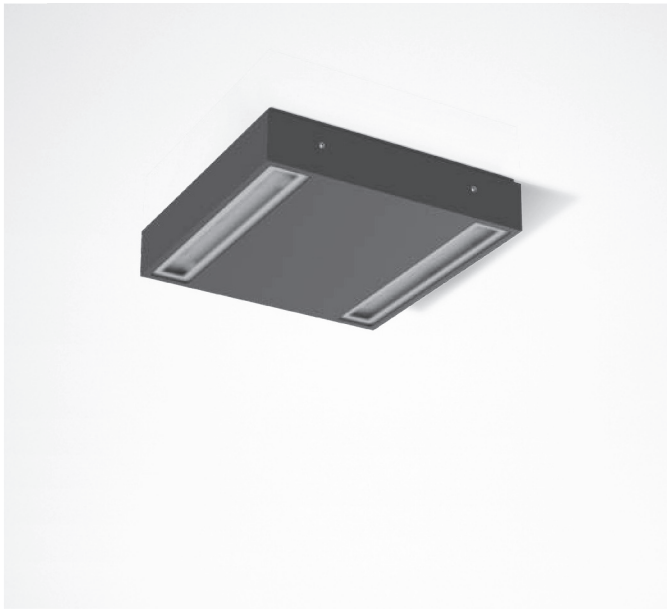


# MIMIK 20 CEILING

design by PERFORMANCE IN LIGHTING



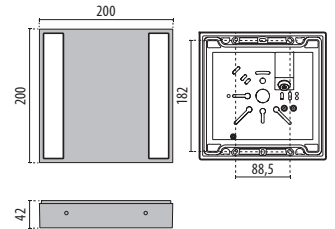
- GR-94 / Metallic grey / Textured
- AN-96 / Anthracite gray / Textured
- WH-87 / White / Textured

Ceiling surface mounted LED luminaire, comprising:

- Die-cast aluminium housing, powder-polyester coated ISO 9227
- Glass diffuser, internally painted for homogeneous diffused light
- Anti-ageing silicone gasket
- Built-in driver
- Available with ON-OFF driver and dimmable DALI
- Stainless steel looking grains
- Photometric data measure according to UNI EN 13032-4 and IES LM-79-08



pg 185  
MIMIK 20



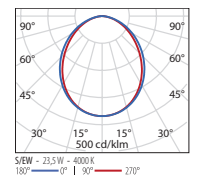
## MIMIK 20 CEILING

IK06 1J xx3

WATTAGE	CLASS	CFR	CRI	KELVIN	COS Ø >=0.9	OPTIC	OPTIC BEAM	LIGHTSOURCE LUMEN OUTPUT	LUMINAIRE LUMEN OUTPUT	L	B	LIFETIME	COLOR/ RAL	PART NUMBER
<b>Power LED 220-240 V 50/60 Hz</b>														
23.5 W	I	-	80	4000	✓	S/EW	-	3560 lm	1778 lm	80	10	84000 h	●	<b>3105851</b>
23.5 W	I	-	80	3000	✓	S/EW	-	3335 lm	1721 lm	80	10	84000 h	●	<b>3105850</b>
23.5 W	I	-	80	4000	✓	S/EW	-	3560 lm	1778 lm	80	10	84000 h	●	<b>3105849</b>
23.5 W	I	-	80	3000	✓	S/EW	-	3335 lm	1721 lm	80	10	84000 h	●	<b>3105848</b>
23.5 W	I	-	80	4000	✓	S/EW	-	3560 lm	1778 lm	80	10	84000 h	○	<b>3105853</b>
23.5 W	I	-	80	3000	✓	S/EW	-	3335 lm	1721 lm	80	10	84000 h	○	<b>3105852</b>

### Power LED - dimmable DALI 220-240 V 50/60 Hz

23.5 W	I	-	80	4000	✓	S/EW	-	3560 lm	1778 lm	80	10	84000 h	●	<b>3105857</b>
23.5 W	I	-	80	3000	✓	S/EW	-	3335 lm	1721 lm	80	10	84000 h	●	<b>3105856</b>
23.5 W	I	-	80	4000	✓	S/EW	-	3560 lm	1778 lm	80	10	84000 h	●	<b>3105855</b>
23.5 W	I	-	80	3000	✓	S/EW	-	3335 lm	1721 lm	80	10	84000 h	●	<b>3105854</b>
23.5 W	I	-	80	4000	✓	S/EW	-	3560 lm	1778 lm	80	10	84000 h	○	<b>3105859</b>
23.5 W	I	-	80	3000	✓	S/EW	-	3335 lm	1721 lm	80	10	84000 h	○	<b>3105858</b>



GENERAL OUTDOOR